

CORDA® OPTIMAP™ 7

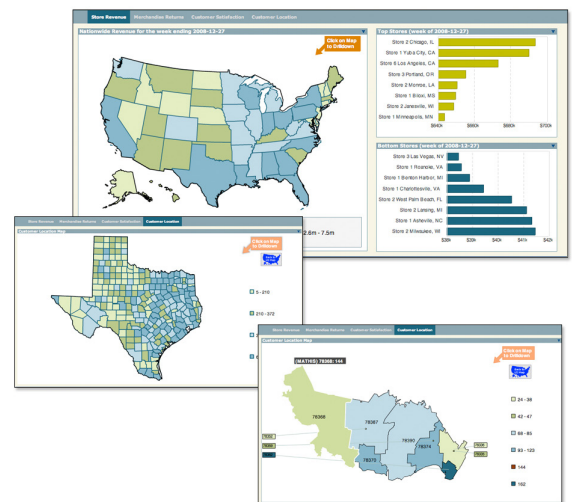


OptiMap 7 is a powerful, easy-to-use, server-based mapping solution. It's perfect for any kind of business data that needs to be displayed in maps or other spatial formats. Because it is database-driven, all of your maps are as up-to-date as your database. OptiMap is designed to get up and running quickly.

Just like Corda's PopChart™ products, **OptiMap** can display additional information when a user moves the cursor over a map and supports unlimited levels of drill-down to allow decision-makers to see both the big picture and the root causes.

OptiMap is used for:

- Geographically mapping company sales performances by region, state, county or zip code.
- Producing executive dashboards to provide a geographic overview of the organization's activities.
- Monitoring network traffic between operation centers, even down to the router nodes.
- Mapping national political campaign contributions by zip code.
- Designing data-driven shipping maps for logistical purposes.
- Creating customized geographic areas to track regional performance, sales territories or other key performance indicators.
- Combine OptiMap maps with PopChart graphs to create the ultimate data visualization solution.
- OptiMap is the first 508-compliant mapping product that provides a perfect solution for federal government agencies and businesses working with government customers.



OptiMap is different and less-expensive than GIS-based mapping programs. OptiMap is designed to present business or organization data in high-quality, fast mapping displays through a web browser. OptiMap can display maps in Flash, PNG, JPEG, PDF and a number of other image formats.

OptiMap is written in Java so it can run on any platform. The OptiMap server application has a small footprint, yet it can scale to easily support thousands of users. For high-availability or high traffic applications, OptiMap includes clustering and fail-over support.

If you already have PopChart Enterprise, you can upgrade to an integrated Combination Product package that lets you combine graphs and maps on the same Web page. This combination package allows you to manage your graphing and mapping servers through a single Administrative Console.

Product Features



OptiMap 7 is a high-performance server based mapping solution that integrates dynamic data in a geographic format for display in a web browser.

- Produces images in FLASH, PNG, JPEG, PDF, EPS, TIFF, WBMP
- Integrates easily with common Web application servers:
 - JSP • Servlets
 - ColdFusion • HTML
 - PHP • ASP
- No proprietary browser plug-ins required
- Data source connectivity
 - XML • HTML tables
 - CSV • Tab delimited
 - ODBC • ADO from COM
 - JDBC from Java
- Integrates with common Web development environments:
 - Java • COM
 - .Net • PHP
 - Perl • JSP
 - ASP • Java Servlets
- Made for rapid deployment
- 100% JAVA
- Generates maps that are truly 508 Compliant
- U.S. Zip codes and Congressional Districts are available
- Creates text boxes, call out notes or popup text that appears on map
- Generates interactive maps with hover items - linking maps, urls, internal systems, etc.
- Map layering allows users to create customized maps that combine and/or divide geographic areas.

